

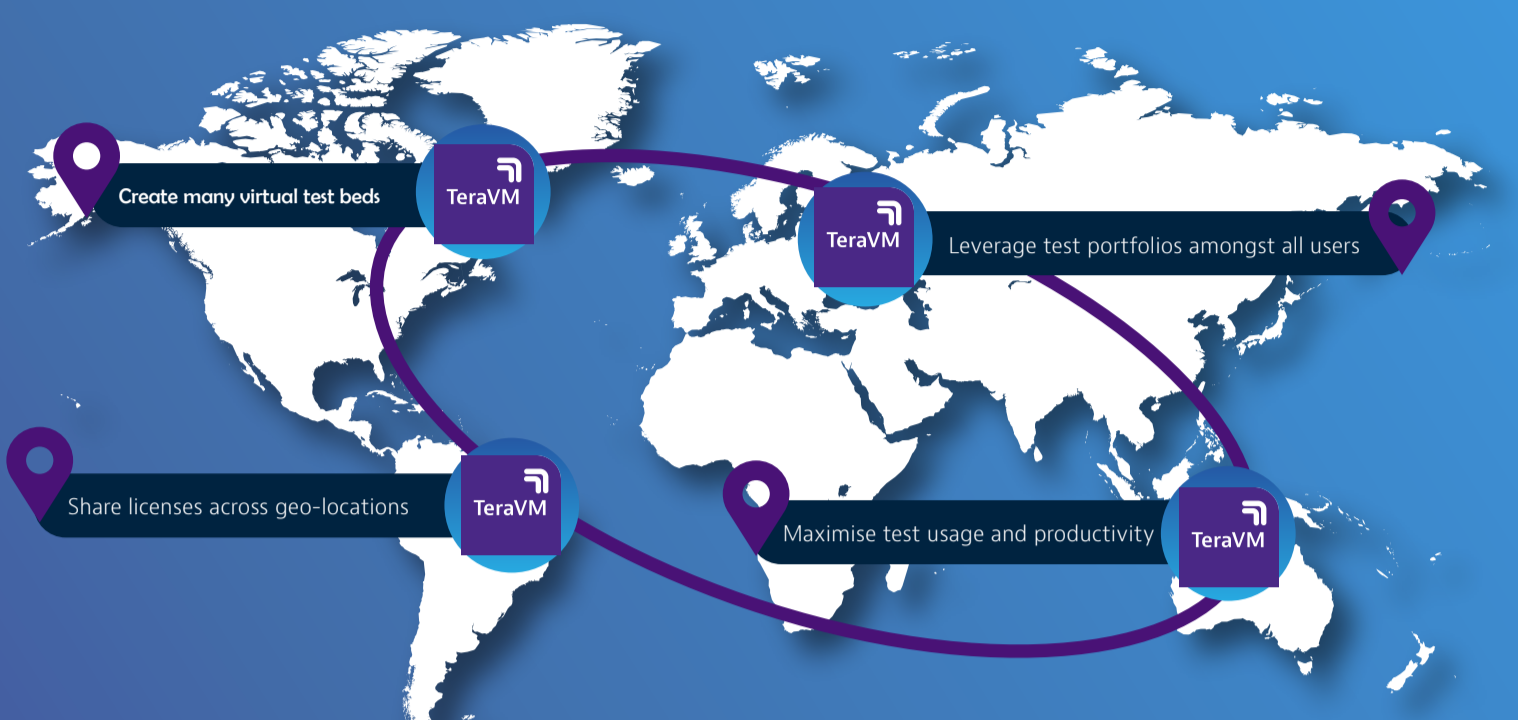
Elastic Test Bed

Portability Mobility Scalability



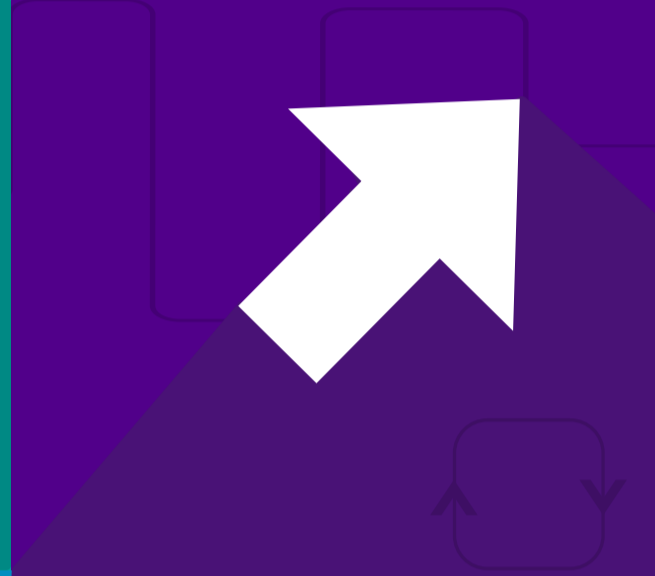
TeraVM delivers the industry's first fully virtual elastic test bed

The flexibility of the elastic test bed allows service providers and equipment manufacturers to adopt a 'follow the sun' pooled resource model, significantly increasing the utilization rates of their testing assets and improving productivity as a result.



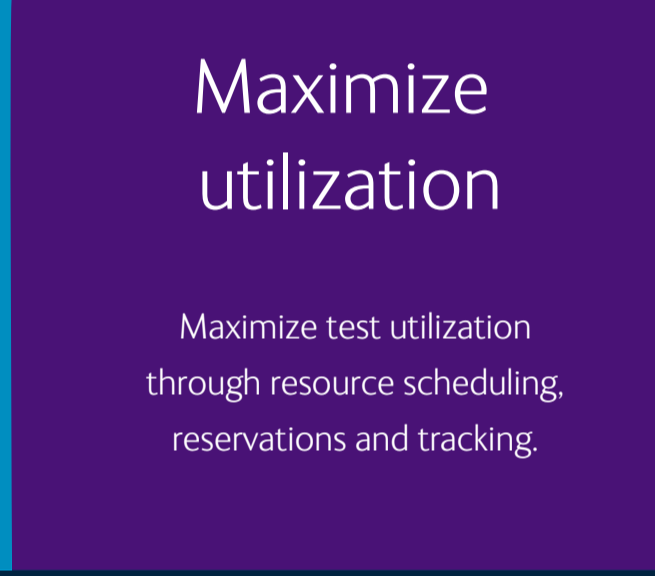
Collaborative approach

Share virtual test assets to run anywhere. Dynamically allocate resources.



Reduce test times

Share proven test cases among users, eliminating wasted time in duplicating configurations.



Maximize utilization

Maximize test utilization through resource scheduling, reservations and tracking.



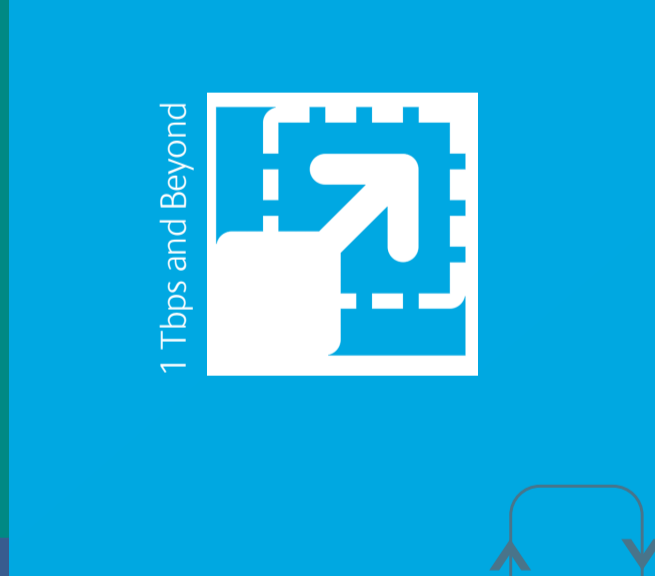
Improve productivity

Minimize learning curve per user with HTML 5 enabled templates and configured test cases.



Minimize investment

Reduce costs by eliminating multiple labs using proprietary test hardware.

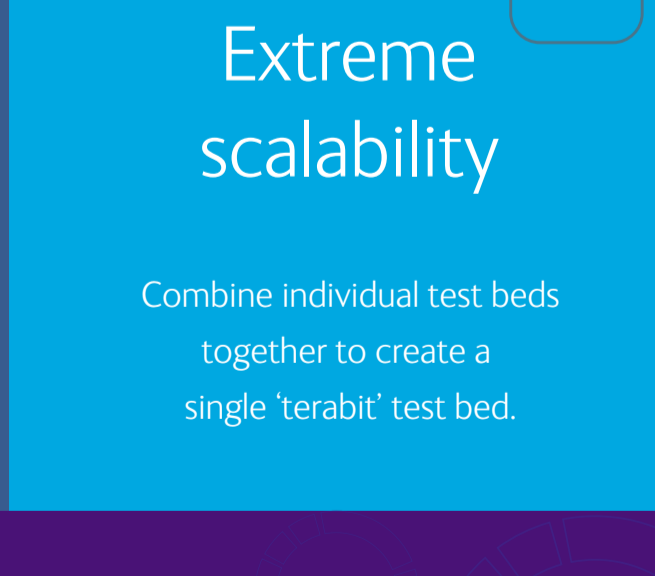


1 Tbps and Beyond



Time to revenue

Catch defects earlier saving costly rework, reducing time-to-market.



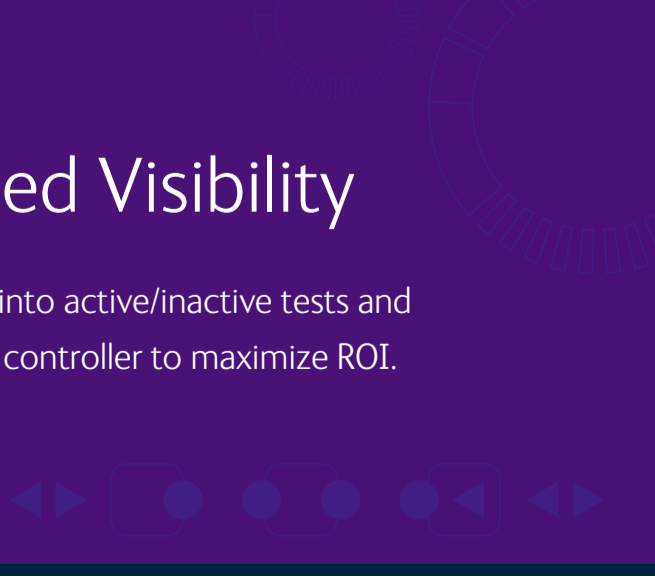
Extreme scalability

Combine individual test beds together to create a single 'terabit' test bed.



Enhanced Visibility

Gain real-time insight into active/inactive tests and under utilization per controller to maximize ROI.



About TeraVM

TeraVM offers the industry's most comprehensive virtualized network test and security validation solution to optimize performance and reduce risks. viavisolutions.com/wirelessvalidation